

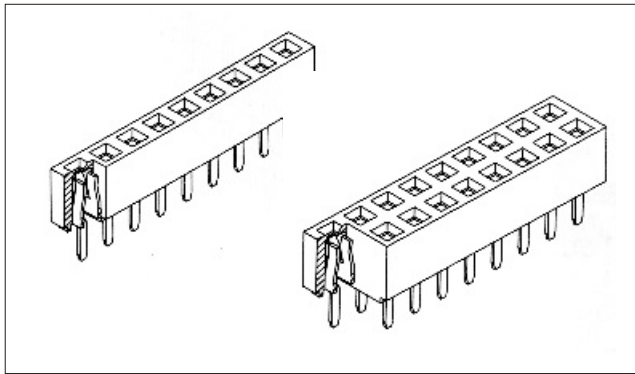
Female Header
Single Row/ Dual Row
Straight DIP Type

Pitch: 2.00 x 2.00mm

Series
222 ~ 224
226 / 228

sgdconn

[Http://www.sgdconn.com](http://www.sgdconn.com)

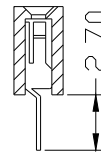
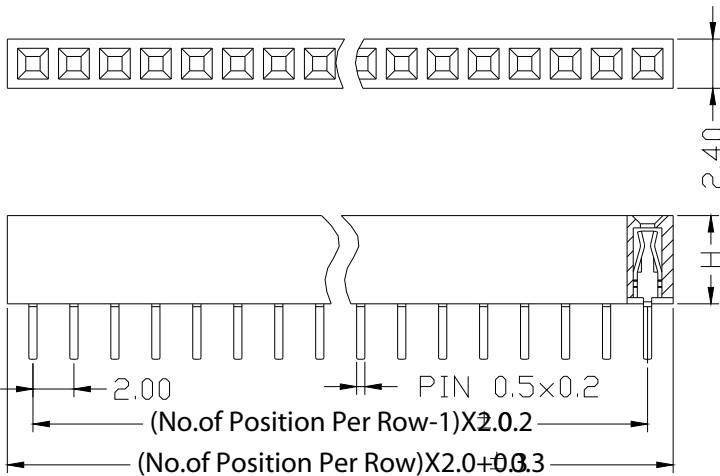


SPECIFICATIONS:

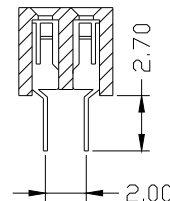
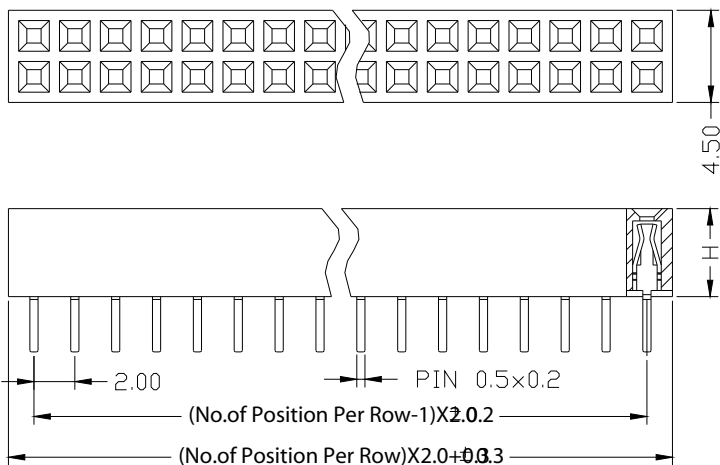
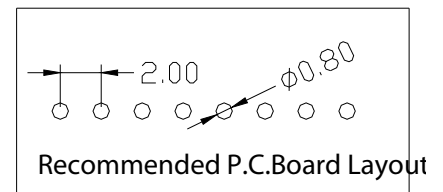
Current Rating: 2.0 AMP
Contact Resistance: 30m Ω Max
Insulation Resistance: 1000M Ω Min
Withstand Voltage: 500VAC/minute
Operation Temperature: -40°C to +105°C

MATERIALS:

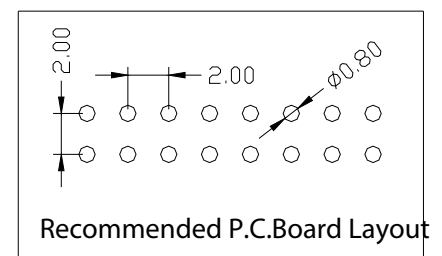
Contact Material: Copper Alloy
Contact Plating: Gold or Tin over 50 μ Ni
Insulator: Glass Filled Polyester (UL94V-0)
Standard: PA 46



H = 2.20mm
H = 3.80mm
H = 4.00mm
H = 4.30mm
H = 4.60mm



H = 2.20mm
H = 3.80mm
H = 4.00mm
H = 4.30mm
H = 4.60mm



Ordering Code

① ② ③ ④ ⑤ ⑥ ⑦ ⑧ ⑨ ⑩
2 2 X X XX S X X 1 0

① Series No.:
2= Female Header

② Pitch: \geq 2.00mm

③ Insulator Height:
2 = 2.2mm
3 = 3.8mm
4 = 4.3mm
6 = 4.6mm
8 = 4.0mm

④ Dip Spacing:
1=Single row
2=Double row

⑤ Number of Contacts:
Single row $\phi 1$ to 40
Double row=02 80

⑥ Tail & Mounting Style:
S=Straight DIP type

⑦ Contact Plated
0=Tin
1=Gold Flash
2=Gold 3u"
3=Gold 5u"
4=Gold 10u"
5=Gold 15u"
6=Gold 30u"

⑧ Material Type
0=PPS
1=PBT
2=LCP
3=Nylon-66
4=Nylon-6T
5=PA46

⑨ Color: 1=Black

⑩ Customer Request

Due to technical progress, all the information provided is subject to change without prior notice.