

Pin Header

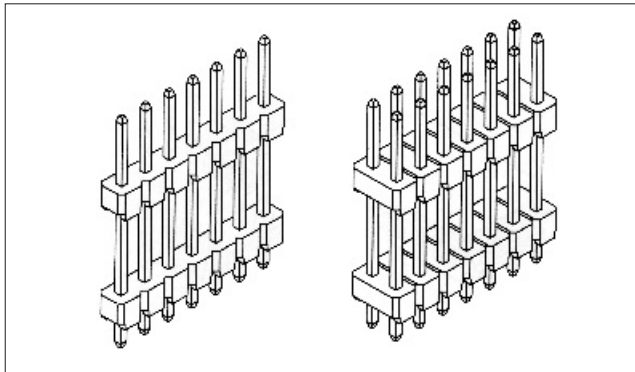
Pitch:2.54mm

Board Spacer Single Row /Dual Row
Straight DIP Type

Series
311-313

sgdconn

[Http://www.sgdconn.com](http://www.sgdconn.com)

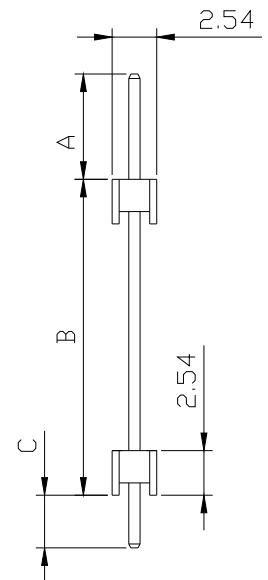
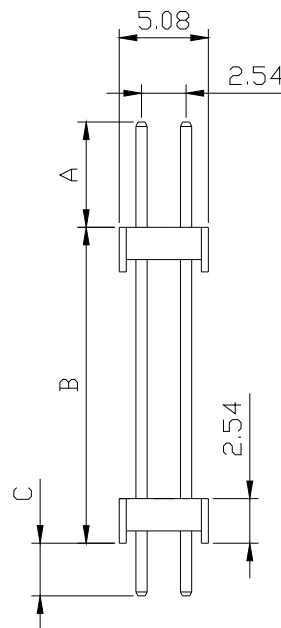
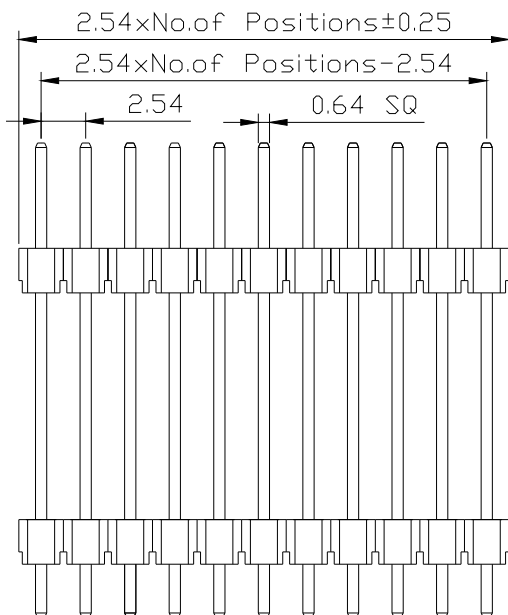
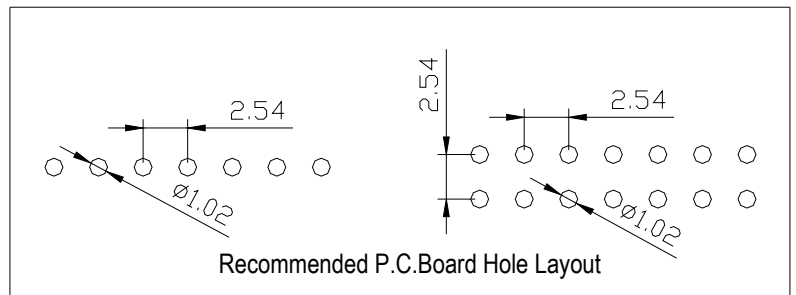
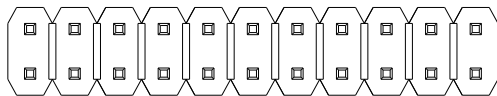
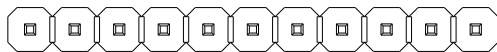


SPECIFICATIONS:

Current Rating: 3.0 AMP
Contact Resistance: 30m Ω Max
Insulation Resistance: 1000M Ω Min
Withstand Voltage: 600VAC/minute
Operation Temperature: -40 $^{\circ}$ C to +105 $^{\circ}$ C

MATERIALS:

Contact Material: Copper Alloy
Contact Plating: Gold or Tin over 50 μ Ni
Insulator Material: Polyester(UL94V-0)
Standard: PA6T



Orderin g Code

① ② ③ ④ ⑤ ⑥ ⑦ ⑧ ⑨ ⑩
3 1 X X XX S 1 4 2 XXX

① Series No.:
3=Pin Header

② Pitch:1 = 2.54mm

③ Insulator Height:
1 =1.50mm
2 =2.00mm
3 = 2.50mm

④ Dip Spacing:
1=Single row
2=Double row

⑤ Number of Contacts:
Single row = 01 to 40
Double row= 02 to 80

⑥ Tail & Mounting Style:
S=Straight DIP Type

⑦ Contact Plated
0=Tin 1=Gold Flash
2=Gold 3u" 3=Gold 5u"
4=Gold 10u" 5=Gold 15u"
6= Gold 30u"

⑧ Material Type
0=PPS 3=Nylon-66
1=PBT 4=Nylon-6T
2=LCP 5=PA46

⑨ Tiers of Body
1 = Single tier
2 = Double tier
3 = Triple tier

⑩ Pin Length
XXX=A+B+C

Due to technical progress, all the information provided is subject to change without prior notice.